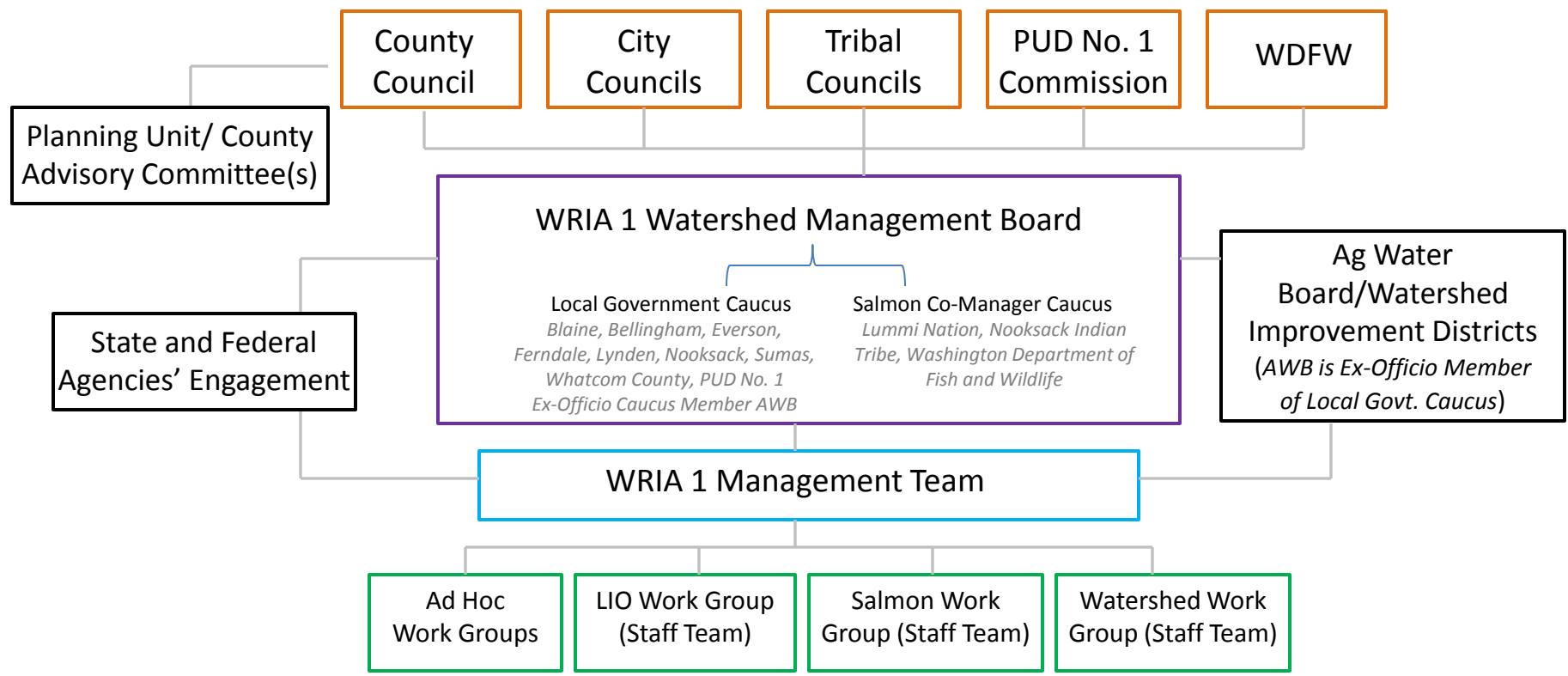


2016 Interlocal Agreement– Clarifications 01/18/18



- Councils of Bellingham, Blaine, Everson, Ferndale, Lynden, Nooksack Sumas, and Whatcom County.
- Tribal councils of the Lummi Nation and the Nooksack Tribe.
- Commission for PUD No. 1
- WDFW decision structure.

Constituents represented by each of the Councils and Commissions.

- Nooksack Indian Tribe Representative
- Lummi Nation Representative
- WDFW Regional Director
- Whatcom County Executive
- Mayors of all Municipalities
- Public Utility District Manager

Constituents represented by each of the members on the WRIA 1 Watershed Management Board. Board entity communications with other organizations as part of ongoing programs (e.g., USFWS, USFS) Public Comment is included on WRIA 1 Watershed Management Board meeting agendas.

- Designated Representative of the WRIA 1 Watershed Management Board including: Nooksack Indian Tribe, Lummi Nation, WDFW, Whatcom County, City of Bellingham, Small Cities Representative, PUD No. 1

Board entity communications with other organizations as part of ongoing programs (e.g., USFWS, USFS) Public Comment is included on meeting agendas.

Salmon Work Group Members include staff of Nooksack Indian Tribe, Lummi Nation, WDFW, USFS, Whatcom County, Bellingham, WCD, Whatcom Land Trust, and NSEA. Combined Review Team associated with Salmon Work Group has additional representation that changes annually but typically includes FCZDAC, Small Cities, Nooksack Forks Community Member, WSU/Sea Grant, WWU, and DNR among others.

Watershed Work Group Members include staff of Nooksack Indian Tribe, Lummi Nation, Whatcom County, Bellingham, PUD No. 1, Department of Ecology

LIO Work Group composition is primarily Salmon Work Group and Watershed Work Group plus Small Cities Representative and MRC Coordinator.

Ad Hoc Work Group composition is based on topic and purpose of work.